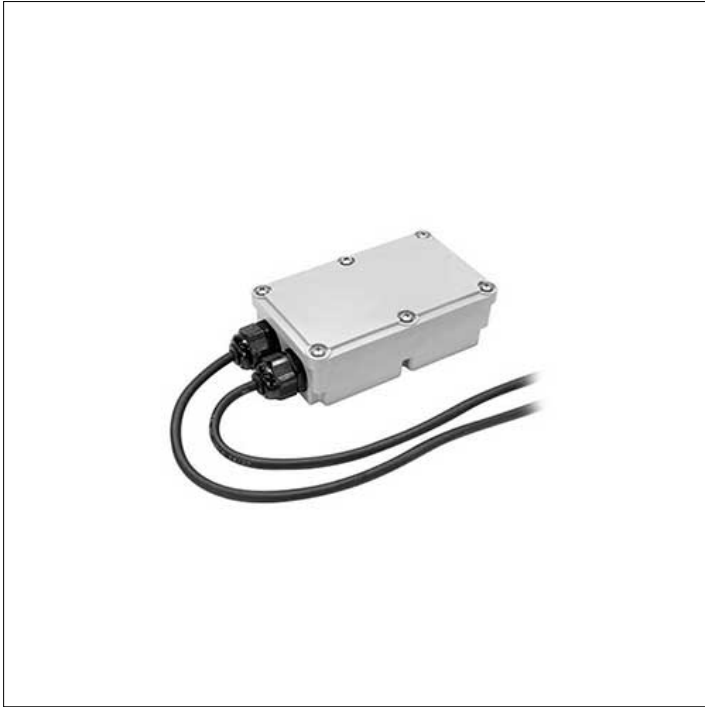


ACCESSORY**S.2476
INTERFACE DALI DT6**

The following devices/interfaces are used to control the color, temperature and brightness of the TUNABLE WHITE LED via DALI (DT6) signal. These devices need a 24Vdc power supply Not Dimmable (type S.2405, S.2406, S.2445 and S.2446) and must be placed between the 24Vdc power supply and the luminaires. Therefore choose a 24V power supply based on the maximum power used of the luminaires up to a maximum of 96W. IP67 Operating mode BALANCE & DIM Require remote power supply 230V/24Vdc Dimensions 175,5mmx86,5mmx43mm